

# DIADEM-350

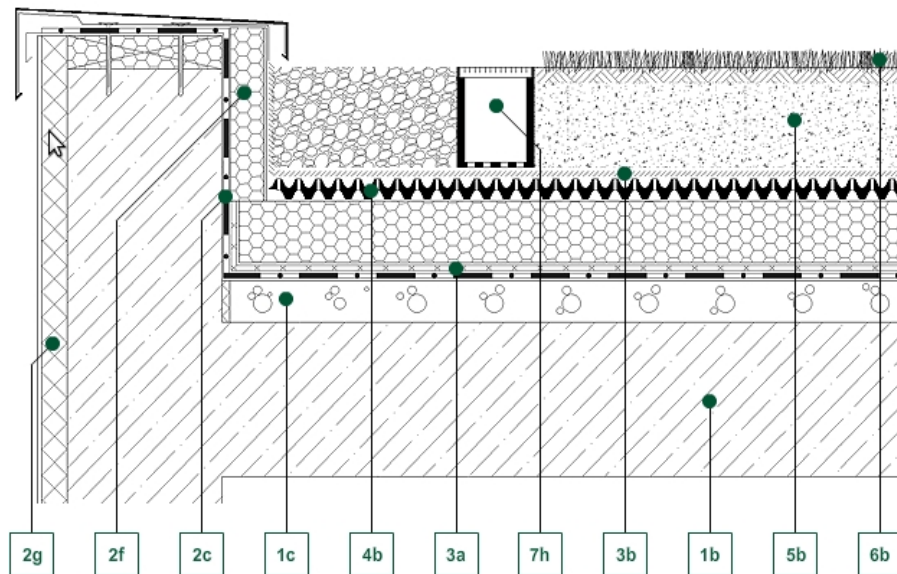
EDGE / RNH DRAINAGE CHANNEL

#901302\_A350\_01



## Detail Drawing

■ Green up the roof!



### Decking constructions:

- 1b - Reinforced concrete structure
- 1c - Slope-forming layer

### Water isolation:

- 2c - Waterproof membrane
- 2f - Extruded PS-foam thermal insulation

### Geotextile layers:

- 3a - VLU-300 mechanical protecting layer
- 3b - VLF-150 filter layer

### Drainboards:

- 4b - DD-40H Retention Board

### Growth medias:

- 5a - SEM-12 extensive growth medium

### Vegetation:

- 6a - Drought-resistant perennials

### Hydrotechnical products:

- 7h - RNH-8/12 Roof Channel

### Description of section:

An inverted roof installation can be an efficient method of retro fitting insulation in order to bring the building up to current thermal requirements. A limiting factor may be the height of the existing upstands. To help alleviate this challenge the RNS drainage channel can be installed and the required upstand height can be measured from the base.

DIADEM USA, Inc.

8795 SW Tualatin Sherwood Rd #1005, Tualatin, OR 97062  
E-mail: [info@diademusa.com](mailto:info@diademusa.com), Web: [www.diademusa.com](http://www.diademusa.com)