

# DIADEM-750

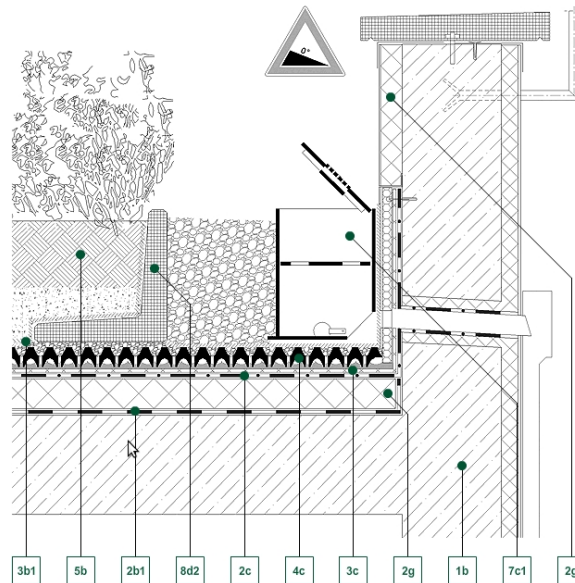
OUTLET EDGE / KSA, BW

#901321\_F150\_02



## Detail Drawing

■ Green up the roof!



### Decking constructions:

1b - Reinforced concrete structure

### Water isolation:

2b1 - Vapor blocking layer

2c - Waterproof membrane

2g - Expanded PS-foam heat insulation

### Geotextile layers:

3b1 - VLF-200 filter layer

3c - VLS-500 protecting and water holding layer

### Drainboards:

4c - DE-60 drainage board

### Growth medias:

5b - SIM-30 extensive growth medium

### Hydrotechnical products:

7c1 - KSA-30 inspection boxes 12"

### Edging element:

8d2 - BW-40 concrete edging piece

### Description of section:

It is good practice to protect the overflow from any obstructions. The KSA Overflow Inspection Box achieves this whilst also providing access for maintenance and inspection. A hinged lid ensures that the unit remains intact even in high winds. The required river stone border around the perimeter is achieved by means of separating the planted area by the use of the BW Concrete Kerb. The kerbs also prevent the spread of plants into the river stone border, thereby keeping maintenance to a minimum.

**DIADEM USA, Inc.**

721 NW Ninth Avenue, Suite 400, Portland, OR-97209  
E-mail: [info@diademusa.com](mailto:info@diademusa.com), Web: [www.diademusa.com](http://www.diademusa.com)