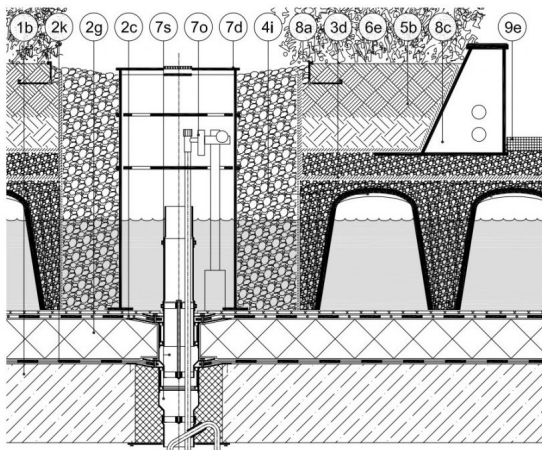


DHA-110D Blue-Green Roof Adjustable Weir Unit 100193

Stainless Steel Weir unit for 4" roof drain, floodings adjustable 0-12" w/ inner riser

KEY FEATURES

- Simple irrigation method, that eliminates conventional equipment
- Screw mechanism allows reliable and precise adjustment of the weir height between 0-12", or drain the roof instantly
- Clamp ring make it compatible with most waterproof systems, including single-ply membranes
- Stainless steel or powder-coated galvanized steel body options



(1b)Roof Deck, (2k)Vapor Barrier, (2g)Insulation, (2c)Waterproof Membrane, (7s)DHA-110D Weir Unit, (7o)Main Water Supply, (7d)KSR-10 Inspection Box, (4i)DiaDrain-60 Drainage, (8a)KLS Gravel Board, (3d)VLF Filter Fabric, (6e)Vegetation, (5b)SIM Growing Media, (8c)RDA Composite Edge, (9e)Concrete Slabs

APPLICATION

Basal flood irrigation is an efficient and low-maintenance technique for irrigating vegetated roofs. It is intended for use on level roofs. Blue-Green Roofs are also stormwater control measures that minimize runoff by maximizing evaporation. The weir unit determines the maximum depth of retained water after rainfall events. Blue-Green Roofs can be either active or passive. During dry periods, active designs replenish water from a reservoir; Typically a rainwater harvesting tank r. An accessory device, attached to the outlet, regulates flow from the reservoir in order to maintain the water level within a predetermined range



SPECIFICATION

DIADEM DHA-110D Blue-Green Roof drain and outlet assembly with an adjustable inner riser to control the ponding level. Fabricated from stainless steel or powder-coated hot-dip galvanized metal parts, for commercial applications. Weir height adjustment uses a screw mechanism. Weir height adjustment ranges from 0 to 12 inches. Fire class A1, Joint diameter at plumbing is 4-11/32 inch, Pat. pend. Size(D×H): 14-1/2" × 8-21/32", Weight: 11.25lbs

TECHNICAL DATA

Maximum Floodings: (inch)	12
Weight: (lbs)	11.25
Material:	Stainless Steel
Plumbing connection: (inch)	4-11/32
Dish Diameter: (inch)	14-1/2
Height: (inch)	8-21/32

Reviewed: 2019-05-16 19:46:46



DIADEM USA, Inc.
8795 SW Tualatin Sherwood Rd #1005, Tualatin, OR 97062
info@diademusa.com • www.diademusa.com



Green Up the Roof!