

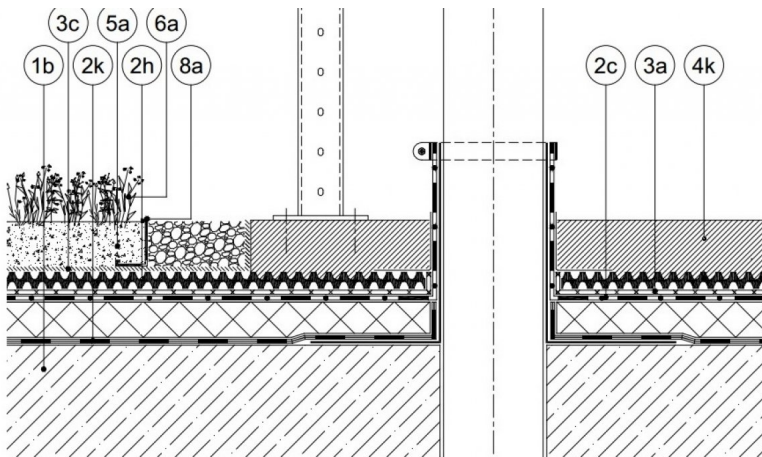
MDE-60

60 mm high, both side shaped structural drainage boards

310117

KEY FEATURES

- Simple and quick installation
- Low structural weight
- Great load bearing capacity
- Increased water drainage and ventilation capacity also in case of Drip Irrigation
- Form and shape stability
- Economical storage and delivery
- Keeps the thermal insulation dry on an inverted roof



(6a)Vegetation, (5a)Growing Media, (3c)VLF150 filter Layer, (2h)MDE-60, (3a)VLU300 Protection Layer, (2c)Root resistant waterproofing membrane, (2k) Roof build up, (1b)Roof deck, (8a) Separation profile, (4k) Concrete

APPLICATION

The DiaDrain product family is formulated for continuous drainage of green roofs. Depending on the product chosen it can take the weight of pedestrian or even heavy vehicle traffic (such as fire engines or moving trucks). The boards can be filled with various aggregates to enhance the load-bearing capacity of the product. Fixing elements are provided those when securing additional structures to the roof (such as HVAC, solar panels or playground structure) without penetrating the water-proof layers.

SPECIFICATION

Mounting- and drainage board made of heavy-duty Rec. ABS, with a height of 60 mm (2 3/8"), shaped on both sides, fixing roof fittings by ballast load, without breaking through the roof structure. Compressive strength: 365.1 kN/m²; Water flow capacity on 2% roof slope (EN ISO 12958): 2.34 l/(m×s); Water retention capacity: 6.5 l/m²; Volume: 28.5 l/m²; Surface weight: 2.7 kg/m²; Board size 196x90x6 cm (LxWxH); Packaging: 264,6 m²/pallet



TECHNICAL DATA

Board size (L×W×H): (mm)	1960×900×60
Weight: (kg/m ²)	3,20
Volume: (l/m ²)	28.5
Water retention capacity: (l/m ²)	6.5
Water flow capacity i=0.01: (l/(m×s))	1.63
Water flow capacity i=0.02: (l/(m×s))	2.34
Water flow capacity i=0.03: (l/(m×s))	2.93
Water flow capacity i=0.05: (l/(m×s))	3.71
Compressive strength (unfilled): (kN/m ²)	365.1
Compressive strength (filled): (kN/m ²)	419.9
Material:	Recycled ABS

Reviewed: 2014-10-10 08:50:11


 DIADEM USA, Inc.
 8795 SW Tualatin Sherwood Rd #1005, Tualatin, OR 97062
 info@diademusa.com • www.diademusa.com



Green Up the Roof!