

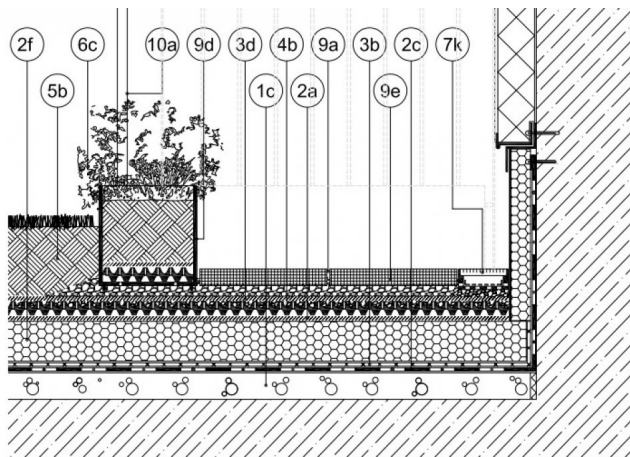
DRS-Light Handrail System

DRS-Light handrail system for Terraces and Exit Paths.

710501

KEY FEATURES

- Can be used on all types of green roofs independent of the installed type of membrane
- Installation without penetrating the roof membranes.
- Installation without cutting and welding.
- Variability yet modules.
- Portable.



(1c)Sloping layer, (2a)Separation Fabric, (2c)Waterproof Membrane, (2f)Thermal Insulation, (3b)Protection Fabric, (3d)Filter Fabric, (4b)Retention Board, (5b)Growing Media, (6c)Vegetation, (7k)Trench Grille, (9a) Slab Spacer, (9d)Plant Container, (9e) Concrete Slabs



APPLICATION

The main applications of the systems are where handrails are necessary - such as securing terraces or exit ways/working paths -, and penetrating the roof structure is not allowed, but aesthetics are preferred.

SPECIFICATION

The DRS-Light is a railing system for terraces and exit ways on roofs without penetrating the roofing membranes, however it has to be attached to façade or using other stabilization methods. The railing system assembly includes the following components: Steel Fencing Panels with top rail and vertical rods with the ballast units. Based on the safety or the design requirement, the ballast may be provided with any of the following products: Planting Containers filled with growing media and planting material; or Concrete Slabs; or Concrete Curbs; or combinations of the three.

TECHNICAL DATA

Height of top Member: (inch)	43
Height of Container: (inch)	13-3/4
Width of Container: (inch)	13-3/4
Lenght of Modul: (inch)	39-3/8"
Lenght of Container: (inch)	35-1/2"
Weigth of the system: (lbs/lf)	11.65
Material of the Rails:	hot dip galvanized steel
Material of the Container:	Composite
Color: (RAL)	on-demand
Material requirement: (lf/lf)	1.01
Installation rate: (h/lf)	0.25

Reviewed: 2017-02-03 22:03:05



DIADEM USA, Inc.
721 NW Ninth Avenue, Suite 400, Portland, OR-97209
info@diademusa.com • www.diademusa.com



Green Up the Roof!