

# KLS-AL-8/12-TK

Telescopically extendable gravel board  
#162061



## Manual

■ Green up the roof!



### Application:

KLS telescopic, also known as extending gravel boards, provide vertical separation between different aggregates with a maximum height difference of 9 inches. In addition they can also be used for edging extensive green or flat roofs, taking special conditions into consideration (eg. roof with no parapet wall).

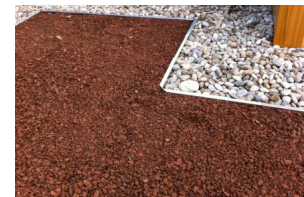
### Installation instructions:

There are two primary ways to use KLS products. A) When the product is used to separate different media of equal height, place edge profiles on top of the filter fleece in the required position and shape. B) For an exposed green roof edge, use the KLSA/KLRA anchorage piece, or the fabric based KLSD solution for more safety and stability. Installation steps: 1) Depending on the application, place edge profiles directly on top of the filter fleece (type A), or it is recommended to raise with 1/8" thick strips the edge profile boards on top of the membrane level (type B) along the edge every 3 feet, and place the KLS gravel board right onto these strips. Unless the construction plan calls for something different, attach the metal anchorage pieces to the boards, exactly where the strips are. Cover the anchorage pieces with the self-adhesive mat, or use the same material as the membrane. Follow the membrane manufacturer's instructions for securing the mats. (Please contact Diadem to verify the self-adhesive mats are compatible with your application.) 2) Attach adjacent KLS gravel boards by sliding the inside pieces out with a minimum of 2-4 inch overlap between the inner and outer profiles. This will ensure alignment and stability. 3) Insert the little U-shaped locking tabs into the gaps to secure the inner and outer boards in the right position, then fold the arms outward on the inner edge. 4) For corners between -88° and +179°. Use the flexible corner pieces in the given height provided by manufacturer. Out of this range, unique angles may be formed by cutting the edging on site. 5) If the fabric based solution is preferred, all edging profiles - which are going to be supported only from one side - in order to provide rigidity to the edging profiles, place the additional 2'-6" feet wide mat into the bottom part of the profile and fix it with the black composite pieces (KLSD) every three feet. The vertical openings of the metal should be left unblocked by the textile in order to allow surplus rainwater to flow out freely into the gutters.

### Installation Tools:

Cut Off Saw, or Gauge Shear power tool.

### Installation Photos:



**DIADEM USA, Inc.**

8795 SW Tualatin Sherwood Rd #1005, Tualatin, OR 97062  
Email: [info@diademusa.com](mailto:info@diademusa.com); Web: [www.diademusa.com](http://www.diademusa.com)

Reviewed: 2014-12-11 08:33:23