

RNFU-AL-05-FF

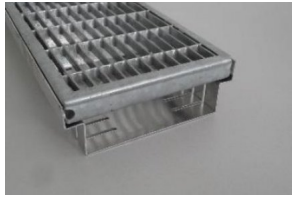
2" High, open bottomed drainage channel with aluminum housing and mesh steel grating.

#230544



Manual

■ Green up the roof!



Application:

The RNF roof channels should be positioned along terrace doors, low windows, and at terrace-wall junctions. Their use should be considered especially where there are large surface areas, as these also collect a substantial amount of rainwater.

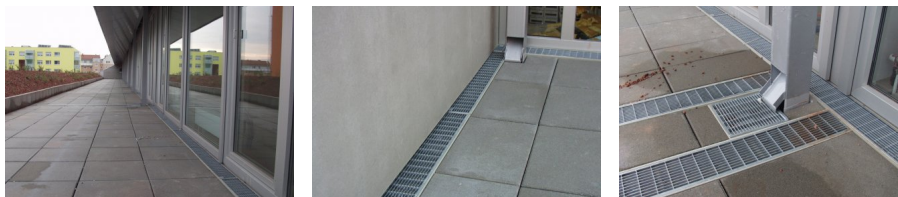
Installation instructions:

After laying down the mechanical protection layer followed by the drainage boards it is recommended to create a thin aggregate bedding layer in the areas where the channels will be installed. The RNH should be placed adjacent to walls following the design plan. Channels are strengthened and stabilized by overlapping the top grille to connect the channel. Additional stability can be achieved by fixing channels together if necessary. Care should be taken to ensure any cut galvanized steel sections are sprayed to prevent corrosion. The surface should be prepared so that the upper edge of the grilles matches with the adjacent surface coating. A level and a wrench are needed. Remove the grilles and loosen the housing screws, adjust the height and check with a level, then re-tighten the screws. Insert the grilles into the housing and check if seated properly.

Installation Tools:

Screwdriver Angle grinder Rubber mallet Miter saw

Installation Photos:



Reviewed: 2021-10-07 16:51:31

DIADEM USA, Inc.

8795 SW Tualatin Sherwood Rd #1005, Tualatin, OR 97062
Email: info@diademusa.com; Web: www.diademusa.com