

# VLU-300

Needle-punched fabric for protection of the roof membrane and retaining storm water.

#320416



## Manual

■ Green up the roof!



### Application:

The main functions of VLU geotextiles are mechanical protection of the waterproof membrane, and retaining a small portion of storm water runoff. □

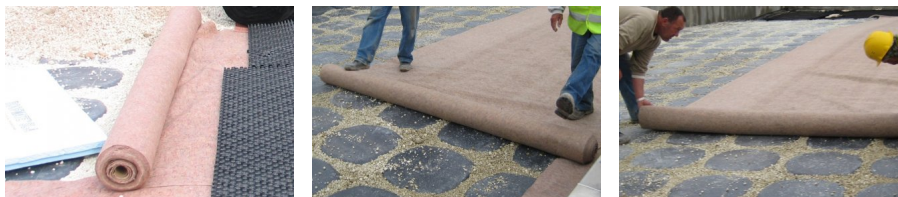
### Installation instructions:

Roll out protection fleece on top of waterproof membrane or root barrier. Overlap seams a minimum of 4" along sides, and 12" along ends. To guard against wind uplift, VLU-300 should be wet thoroughly after installation, or temporarily ballasted if left for an extended period.

### Installation Tools:

For safety reasons and for protection of the roof membrane, a utility knife with a hook blade should be used for cutting VLU-300. Never cut directly on roof membrane. Protect membrane with plywood or other stable, rigid surface when cutting.

### Installation Photos:



Reviewed: 2015-07-03 11:47:41

## DIADEM USA, Inc.

8795 SW Tualatin Sherwood Rd #1005, Tualatin, OR 97062  
Email: [info@diademusa.com](mailto:info@diademusa.com); Web: [www.diademusa.com](http://www.diademusa.com)