

DIADEM-150

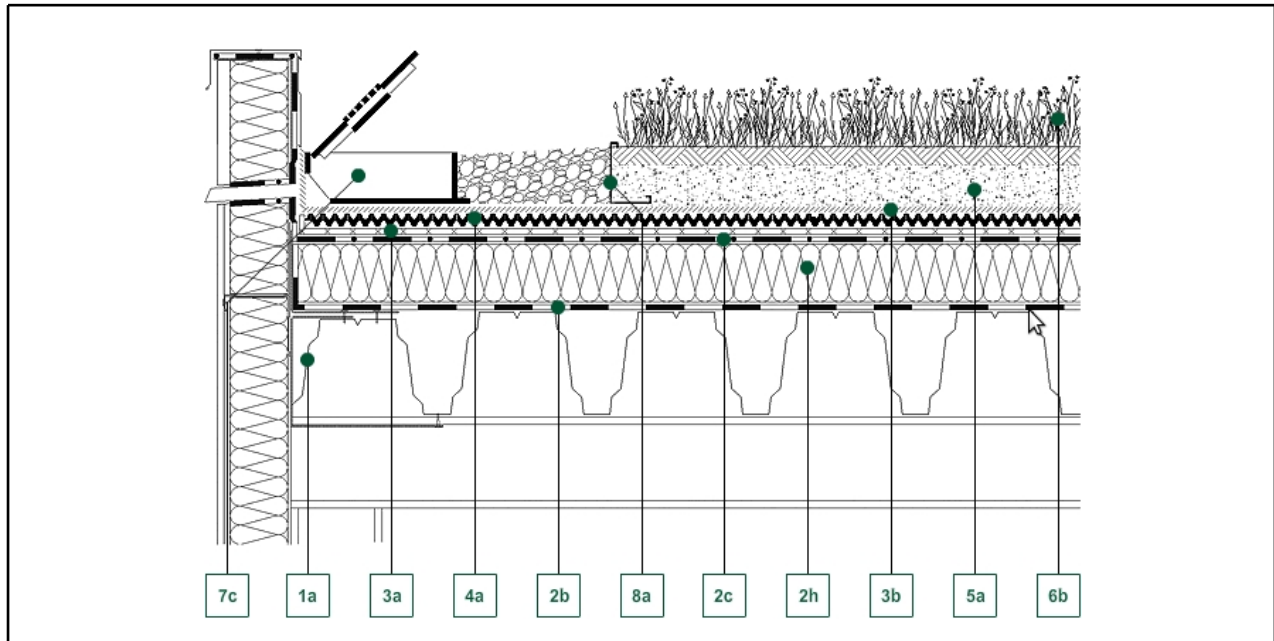
OUTLET EDGE / KSA SCUPPER INSPECTION BOX KLS

#901300_A150_01



Detail Drawing

■ Green up the roof!



Decking constructions:

1a - Steel trapezoid sheet structure

Water isolation:

2b - FLW-400 ext. Root protection
2c - Waterproof membrane
2h - Thermal insulation

Geotextile layers:

3a - VLU-300 mechanical protecting layer
3b - VLF-150 filter layer

Drainboards:

4a - DD-25H drainage board

Growth medias:

5a - SEM-12 extensive growth medium

Vegetation:

6a - Drought-resistant perennials

Hydrotechnical products:

7c - KSA-10 scupper boxes 4"

Edging element:

8a - KLS-AL-8/12 Gravel Board

Description of section:

It is recommended, that each roof area has a minimum of two drainage outlets. Local conditions determine where these are located and may also indicate an additional requirement for the installation of an overflow. It is important that these drainage points remain free from any obstruction, therefore access should be provided for maintenance purposes.

DIADEM USA, Inc.

8795 SW Tualatin Sherwood Rd #1005, Tualatin, OR 97062
E-mail: info@diademusa.com, Web: www.diademusa.com