

DIADEM-350

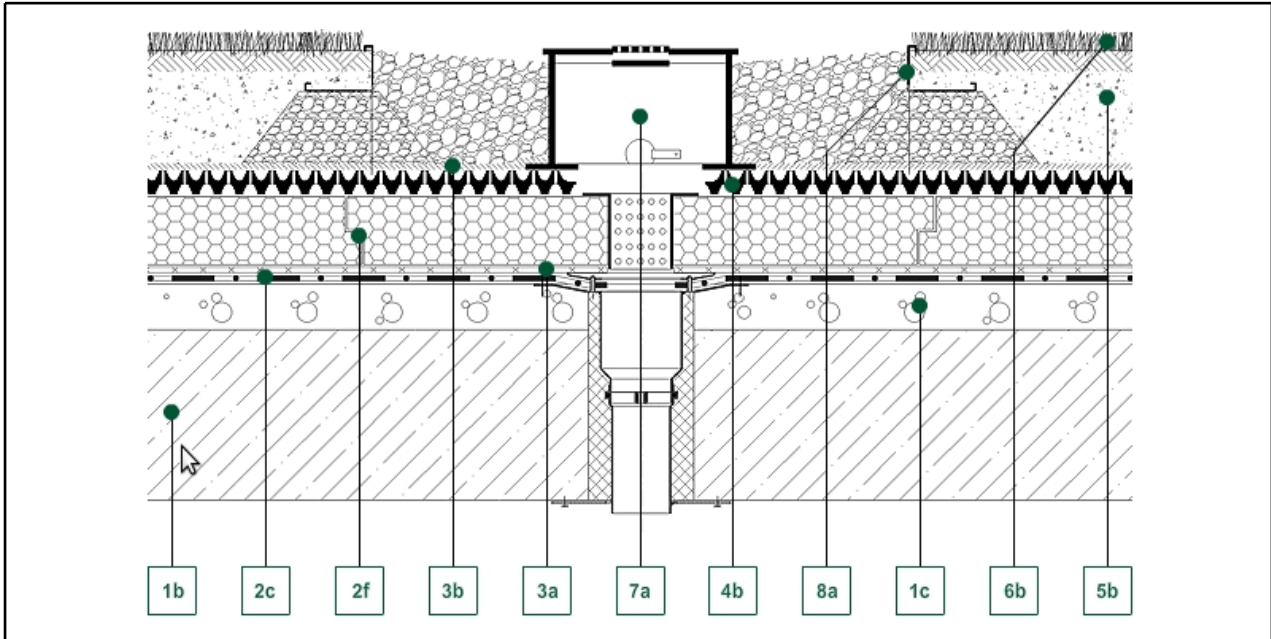
OUTLET / KSR MAINTENANCE BOX KLS

#901312_D350_01



Detail Drawing

■ Green up the roof!



Decking constructions:

- 1b - Reinforced concrete structure
- 1c - Slope-forming layer

Water isolation:

- 2c - Waterproof membrane
- 2f - Extruded PS-foam thermal insulation

Geotextile layers:

- 3a - VLU-300 mechanical protecting layer
- 3b - VLF-150 filter layer

Drainboards:

- 4b - DD-40H Retention Board

Growth medias:

- 5b - SIM-30 extensive growth medium

Vegetation:

- 6b - Perennials, lawn

Hydrotechnical products:

- 7a - KSR-10 Greenroof outlet box

Edging element:

- 8a - KLS-AL-8/12 Gravel Board

Description of section:

It is important that the rainwater is able to flow freely to the drainage points. This is achieved by cutting a hole in the drainage layer and insulation around the outlet and to the same diameter. A KSR Inspection Box is then placed above the opening and supported on the drainage layer. The KSR Inspection Box in conjunction with the KLS Gravel Board and Diadrain Drainage Layer ensures that the water reaching the outlet is clear of any material that may cause an obstruction.

DIADEM USA, Inc.

8795 SW Tualatin Sherwood Rd #1005, Tualatin, OR 97062
E-mail: info@diademusa.com, Web: www.diademusa.com