

# DIADEM-750

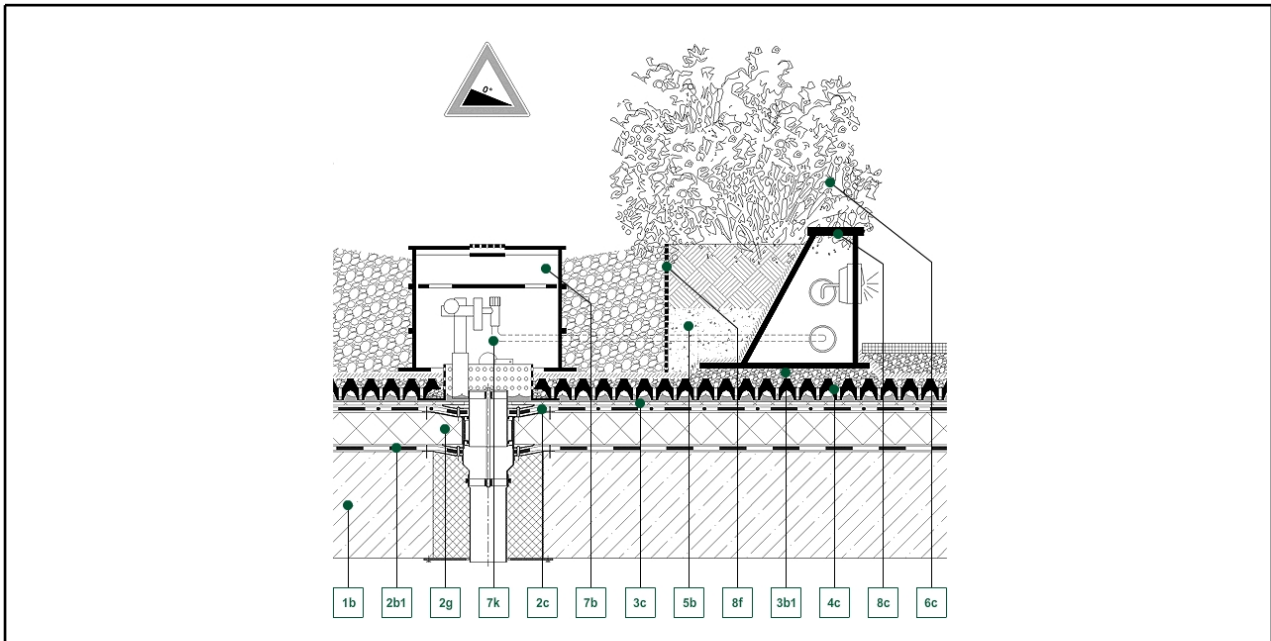
TERRACE OUTLET EDGE / KSR MAINTENANCE BOX RDA

#901314\_D750\_01



## Detail Drawing

■ Green up the roof!



### Decking constructions:

1b - Reinforced concrete structure

### Water isolation:

2b1 - Vapor blocking layer  
2c - Waterproof membrane  
2g - Expanded PS-foam heat insulation

### Geotextile layers:

3b1 - VLF-200 filter layer  
3c - VLS-500 protecting and water holding layer

### Drainboards:

4c - DE-60 drainage board

### Growth medias:

5b - SIM-30 extensive growth medium

### Vegetation:

6c - Coppices/perennials, shrubs

### Hydrotechnical products:

7b - KSR-45 inspection boxes 17-6/8"  
7k - Water level regulating equipment

### Edging element:

8c - RDA-40 edging piece 16"  
8f - Perforated capping sheet

### Description of section:

The BKS Irrigation System works on the principle of a uniform level of water being maintained on the roof surface. This is achieved by constructing the roof to zero falls. As the water level drops this is replenished from a separate rainwater harvesting tank, which in turn is connected to the water mains via a double check valve. This rainwater harvesting tank is constructed specifically for each project. The water level on the roof is maintained at a predetermined level by means of an extension piece attached to each outlet. The RDA is a cleverly designed lightweight alternative to the traditional heavy garden wall construction. In addition to providing separation of the garden and terrace elements, it also provides a decorative finish which can be used for the location of cables, pipes, etc. and lighting.

DIADEM USA, Inc.  
8795 SW Tualatin Sherwood Rd #1005, Tualatin, OR 97062  
E-mail: info@diademusa.com, Web: www.diademusa.com