

# DIADEM-1200

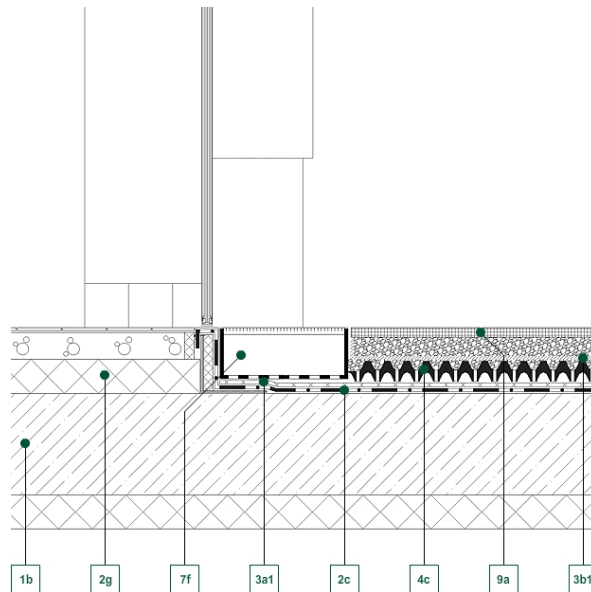
TERRACE EDGE WALL / TRH GRILLE

#901310\_C1200\_01



## Detail Drawing

■ Green up the roof!



### Decking constructions:

1b - Reinforced concrete structure

### Water isolation:

2c - Waterproof membrane

2g - Expanded PS-foam heat insulation

### Geotextile layers:

3a1 - VLU-500 mechanical protecting layer

3b1 - VLF-200 filter layer

### Drainboards:

4c - DE-60 drainage board

### Hydrotechnical products:

7f - TRS-60 foot grid

### Terraces accessories:

9a - FK-5 Slab spacer

### Description of section:

It is increasingly common for clients to demand level access from their building to the adjoining terrace. This creates detailing difficulties with regard to ensuring there is no water ingress. One possible solution is to use the TRS Door Access Grille, which, by the nature of its extended size and open structure removes the danger of any build up in this crucial area by feeding the rainwater directly into the drainage system. It is essential that proper falls are designed to ensure that rainwater is directed away from the building. In some locations a canopy should be installed above the door.

DIADEM USA, Inc.

8795 SW Tualatin Sherwood Rd #1005, Tualatin, OR 97062  
E-mail: [info@diademusa.com](mailto:info@diademusa.com), Web: [www.diademusa.com](http://www.diademusa.com)