

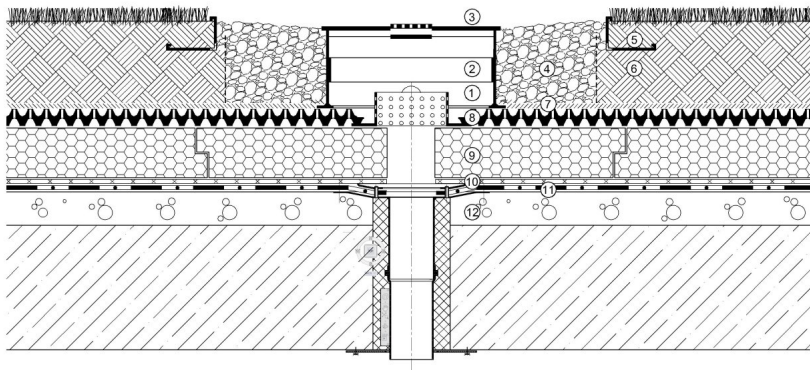
Hot Dip Galvanized Steel Grille

Fits for D16KSR inspection boxes

030654

KEY FEATURES

- Applicable for all D16KSR inspection boxes and risers,
- Durable, easy to maintain,
- For pedestrian foot traffic only.



(1)KSR-10 inspection box, (2)KSR+10 extension element, (3)KSR cover, (4)Gravel, (5)KLS gravel board, (6)SIM growing media, (7)VLF filter geotextile, (8)DiaDrain-40 drainage and reservoir board, (9)Thermal insulation, (10)VLU mechanical protection layer, (11)root resistant waterproofing membrane, (12)roof construction

APPLICATION

The hot-dip galvanized steel grilles for D16KSR round inspection boxes have to be installed over the terrace downpipes in order to facilitate the fast drainage of surface water.

SPECIFICATION

Grille for D16KSR round inspection boxes, made out of carbon steel. The grilles are bolted down to the housing to prevent wind uplift. All grates having safe live load (as calculated in paragraph 6.1.6 of the ANSI Standard) under 2,000 lbs. For pedestrian foot traffic only. Diameter: 17", weight 8.15 lbs



TECHNICAL DATA

Finish:	Hot-dip galvanized
Type of grill:	mesh
Diameter: (inch)	17
Material:	Carbon Steel
Weight: (lbs)	8.15
Height: (inch)	3/4
Mesh size: (inch)	1 1/2 x 3/8

Reviewed: 2021-12-06 20:46:56

