

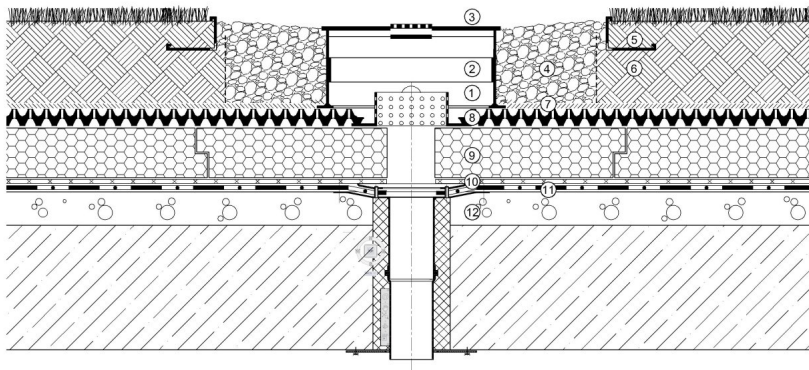
KSR+5

Extension element for KSR inspection boxes. Height: 2"

100201

KEY FEATURES

- Can be used on all types of intensive green roofs regardless of pavers or vegetation placed around the roofoutlet
- Stacking almost limitless
- The lid is lockable to the extension ring too
- Compatible with the KSR+10 extension ring



(1)KSR-10 inspection box, (2)KSR+10 extension element, (3)KSR cover, (4)Gravel, (5)KLS gravel board, (6)SIM growing media, (7)VLF filter geotextile, (8)DiaDrain-40 drainage and reservoir board, (9)Thermal insulation, (10)VLU mechanical protection layer, (11)root resistant waterproofing membrane, (12)roof construction

APPLICATION

With the aid of the height extension elements KSR+5 and KSR+10 (2" and 4" in height, respectively), it is easy to modify the height of the KSR-10 boxes to meet the required substrate depth.

SPECIFICATION

KSR+5 height extension rings, made out of composite materials for KSR-10 maintenance boxes. Diameter 15-3/4"x2", weight: 1.1 lbs.

TECHNICAL DATA

Height: (inch)	2.0
Diameter: (inch)	15-3/4
Weight: (lbs)	1.1
Color: (RAL)	7032
Material:	Polypropylene
Material Requirement: (pc/pc)	1
Installation Standard: (hr/piece)	0.80

Reviewed: 2017-02-02 14:08:33



DIADEM USA, Inc.
8795 SW Tualatin Sherwood Rd #1005, Tualatin, OR 97062
info@diademusa.com • www.diademusa.com



Green Up the Roof!