

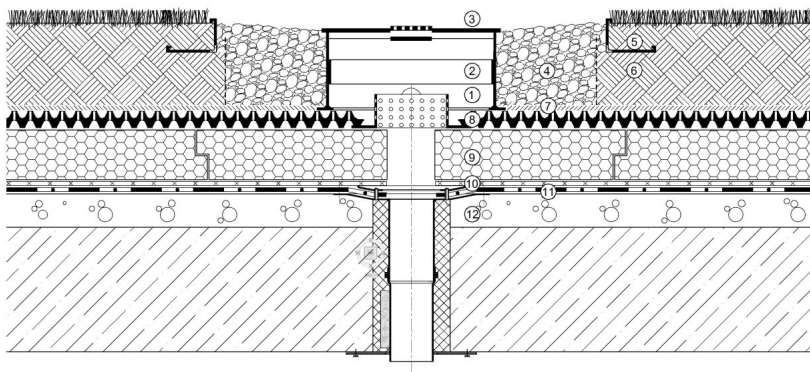
D16"KSR-15

Drain cover and inspection box for intensive green roofs

120191U0

KEY FEATURES

- Can be used over all types of roof outlets
- The lid is lockable and it can withstand foot traffic and wind uplift
- The optionally built-in safety lid provides secondary level of safety
- It prevents sunlight getting into the outlet
- The image on the right shows the Base, the 12" and the 6" Raiser and the Lid >>



- (1)D16"KSR-15 inspection box, (2)D16"KSR+12 extension element, (3)D16"KSR lid, (4)Gravel, (5)KLS gravel board, (6)SIM growing media, (7)VLF filter geotextile, (8)DiaDrain-40 drainage and reservoir board, (9)Thermal insulation, (10)VLU mechanical protection layer, (11)root resistant waterproofing membrane, (12)roof construction

SPECIFICATION

KSR-15 inspection boxes are installed on intensive green roofs with a 8" or deeper system build up to ensure the professional maintenance of outlets and prevent their contamination. The boxes are made of polypropylene with a lockable lid and a stainless steel filter to prevent debris from entering the drainage system. Each box has four precuts around the bottom, for 2" drain pipe connections.



TECHNICAL DATA

Opening at the bottom: (inch)	16-9/16
Weight: (lbs)	6.62
Color: (RAL)	6037
Inside Clearance: (inch)	16-3/16
Height with lid: (inch)	7-1/2
Material:	Polypropylene
Material Requirement: (pc/pc)	1.05
Installation Standard: (hr/piece)	0.80

Reviewed: 2020-09-16 12:51:57



DIADEM USA, Inc.
8795 SW Tualatin Sherwood Rd #1005, Tualatin, OR 97062
info@diademusa.com • www.diademusa.com



Green Up the Roof!