

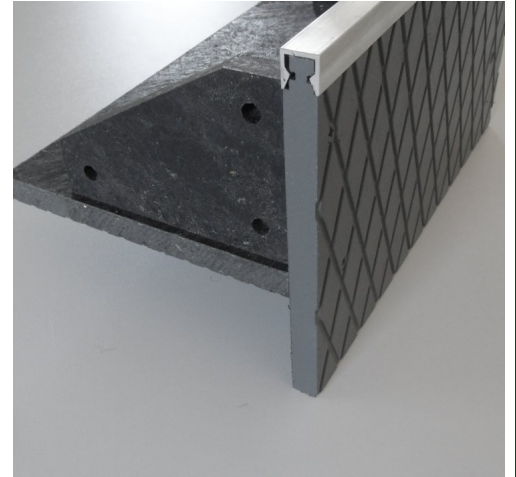
RDT-19 Recyclen

160402

Recycled composite RDL type of edging products are leaning the build up layers of the different type of

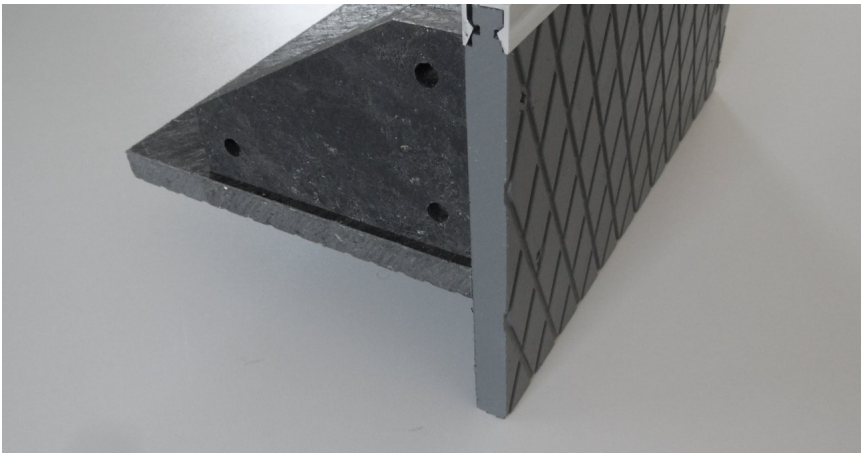
KEY FEATURES

- Weight is from 4.1lbs/lf
- Enviromental friendly materials
- Curved shapes available
- The roof structure underneath remains intact
- Multiple furring and coating options
- No local concreting no rebars needed
- Quick installation
- Long-lasting



APPLICATION

RDL edges could be used, in the edging of terraces and green roofs, or separating different areas to give a special design to the roof landscape. They are important distinctive pieces in the development of a garden layout. In addition, these units has practical function too, as it could be used to house, trunking for electrical cabling or irrigation hoses. For decorative purposes lighting could be mounted into the front panel.



Corner cm 115x19x12

SPECIFICATION

RDL products are made of recycling composit materials for edging or landscaping light-weight green roofs. Special feature of these units, to house, irrigation hoses and/or electrical cabling. For design purposes lighting can be mounted into the front panel. A resin based plaster coating is an option, which gives a pearlescent appearance.

TECHNICAL DATA

Height: (inch)	4 ¾
Installation rate: (lf / hr)	12
Packaging unit: (each / pal)	60
Color:	dark gray
Material:	Recycling Composite
Weigth: (lbs/lf)	4.1
Thickness: (inch)	5/8
Lenght: (inch)	45 ¼
Width: (inch)	7 ½
Material requirement: (lf/lf)	1.02

Reviewed: 2014-12-11 09:14:28



DIADEM USA, Inc.
8795 SW Tualatin Sherwood Rd #1005, Tualatin, OR 97062
info@diademusa.com • www.diademusa.com



Green Up the Roof!