

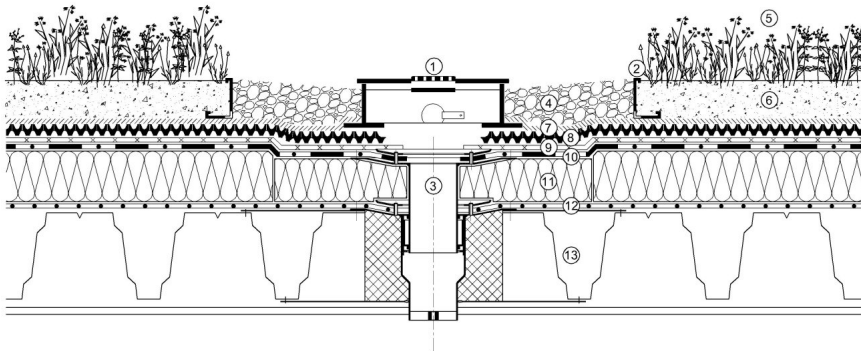
KLS-AL-6/9-TK

Perforated aluminum sheet metal edging

162048

KEY FEATURES

- No need for bedding
- Quick installation
- Does not impede water drainage
- Long-lasting



(1)KSE-10 inspection box, (2)KLS-AL-6/9-TK telescopic gravel board, (3)Outlet, (4)Gravel, (5)Vegetation, (6)SEM growing media, (7)VLF filter geotextile,(8)DiaDrain-25H flow-delay retention board,(9)VLU mechanical protection layer, (10)Root resistant waterproofing membrane, (11)Thermal insulation, (12)FLW-400 vapour control layer, (13)Roof construction

APPLICATION

KLS gravel boards provide vertical separation between different aggregates. They can also be used for edging extensive green roofs.

SPECIFICATION

KLS edge profiles are L-shaped and made of aluminum or stainless steel with perforations along the main fold for continuous drainage. They provide vertical separation between gravel and growing media or contain an exposed green roof edge. Self supporting and require no membrane penetration.



TECHNICAL DATA

Height: (inch)	4-3/4"
Width: (inch)	3-1/8"
Thickness: (Mil)	60
Profile Length: (inch)	78-3/4
Weight: (lbs/pcs)	2.20
Perforations: (inch ² /ft)	1.45
Material:	Grade Aluminium
Installation Standard: (hr/piece)	0.15
Material requirement: (piece/piece)	1.05

Reviewed: 2014-06-25 11:11:54



DIADEM USA, Inc.
8795 SW Tualatin Sherwood Rd #1005, Tualatin, OR 97062
info@diademusa.com • www.diademusa.com



Green Up the Roof!