

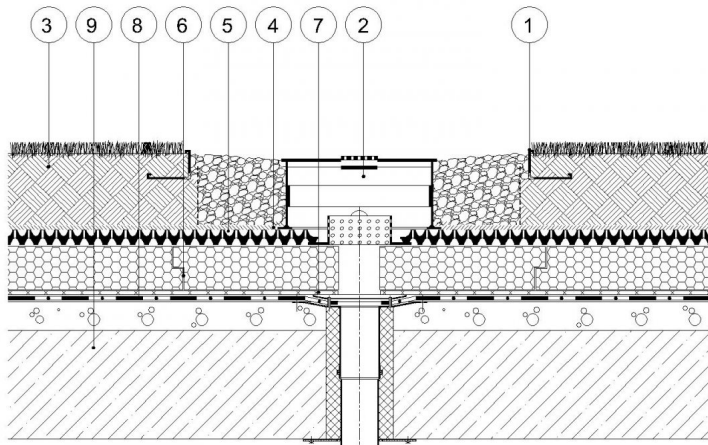
KLS-AL-8/12-TK

Telescopically extendable gravel board

162061

KEY FEATURES

- Easy and quick installation
- Less storage space required, thanks to the 6.56 feet long units that are extendible to almost 13 feet.
- Any angle corner can be easily created
- Does not impede water drainage



(1)KLS-AL-8/12-TK telescopic gravel board, (2)KSR-10 inspection box, (3) SIM growing media, (4)VLF filter layer, (5)DiaDrain-40 drainage and reservoir board, (6)Thermal insulation, (7)VLU mechanical protection layer, (8)Root resistant waterproofing membrane, (9)Roof construction

APPLICATION

KLS telescopic, also known as extending gravel boards, provide vertical separation between different aggregates with a maximum height difference of 9 inches. In addition they can also be used for edging extensive green or flat roofs, taking special conditions into consideration (eg. roof with no parapet wall).

SPECIFICATION

KLS edge profiles are L-shaped and made of aluminum or stainless steel with perforations along the main fold for continuous drainage. They provide vertical separation between gravel and growing media or contain an exposed green roof edge. Self supporting and require no membrane penetration.



TECHNICAL DATA

Height: (inch)	4-3/4"
Width: (inch)	3-1/8"
Extended Length: (inch)	157 7/16
Profile Length: (inch)	78-3/4
Weight: (lbs/pcs)	2.20
Thickness: (Mil)	60
Material:	Grade Aluminium
Installation Standard: (hr/piece)	0.15
Material requirement: (piece/piece)	1.05
Perforations: (inch ² /ft)	1.45

Reviewed: 2014-12-11 08:33:23



DIADEM USA, Inc.
8795 SW Tualatin Sherwood Rd #1005, Tualatin, OR 97062
info@diademusa.com • www.diademusa.com



Green Up the Roof!