

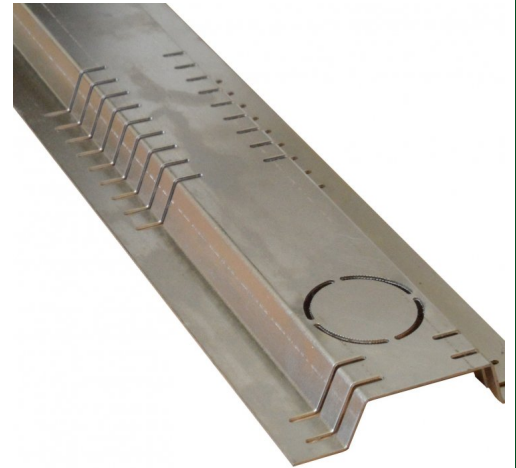
SK-AL-24/60

Perforated Drain Conduit

164047

KEY FEATURES

- easy and fast installation
- low installation height - it can be also used in case of low height of bulk material
- minimal structural load
- secure drainage



APPLICATION

SK-AL-24/60 assures fast and high volume water drainage from places with the risk of water overflow (adjacent large facade areas, downspouts, etc.) to the roof outlets. It could improve drainage capacity of single-course green roofs and paved roof terraces as well. A drain pipe with a diameter of 2" can be attached to the drainage channel, so the drainage facilities (downspouts, terrace grilles, inspection boxes) can be joined directly.

SPECIFICATION

Drainage channel made of aluminium for appropriate channeling of green roofs with single-course construction or of terraces and other surfaces without drainage boards; with a pre-cut drain pipe opening with a diameter of 2"; Thickness of the aluminium sheet: 3/64"; dimensions: 78-24/32"x4-29/32"x31/32" (LxWxH); weight: 2 lbs/pcs; 1 lbs/lm.

TECHNICAL DATA

| | |
|--------------------------------|-----------|
| Length: (in) | 78-24/32 |
| Nominal width: (in) | 2-11/32 |
| Total width: (in) | 4-29/32 |
| Height: (in) | 31/32 |
| Thickness: (in) | 3/64 |
| Weight: (lbs/lm) | 1 |
| Weight: (lbs/pcs) | 2 |
| Material: | Aluminium |
| Binding elements: (pcs) | 2 |
| Coverage rate: (Hr/lm) | 0.1 |
| Material requirement: (pcs/lm) | 0.5 |

Reviewed: 2014-12-15 10:26:40



DIADEM USA, Inc.
8795 SW Tualatin Sherwood Rd #1005, Tualatin, OR 97062
info@diademusa.com • www.diademusa.com



Green Up the Roof!