

TRS-100-FF

210405

Large drainable grille for use in front of doorways at roof terraces.

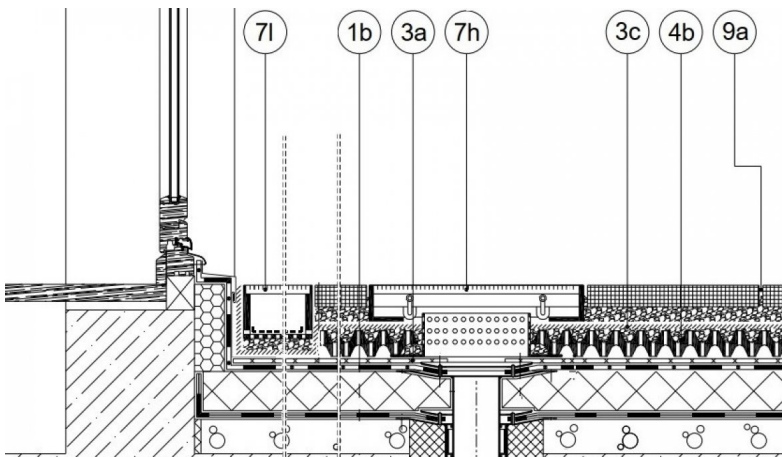
KEY FEATURES

- Three standard sizes are available
- The version with an opening on the bottom enables water flow into drainage layer
- Replaceable mud brushes reduce mud tracking
- Easy to maintain
- Durable hard plastic housing
- Grills also available in stainless steel



APPLICATION

TRS trench drains is an elegant drainage solution for entrance areas to reduce the risk of floodings, without having a direct sewage connection. TRS products can be used for residential and commercial use to protect from rainsplash, melting snow and everyday debris.



7l Trench Drain, 1b Roof Structure, 3a Protection Fleece, 7h Drain box wit Grille lid, 3c Filter layer, 4b Drainage layer, 9a Concrete slabs

SPECIFICATION

TRS trench drains is an elegant drainage solution for entrance areas to reduce the risk of floodings, without having a direct sewage connection. The product is made of recycled composite with a choice of hot dip galvanized, or stainless steel grille lids. The standard sizes are 12x12", 16x16" or 20x20", each of which can be ordered in individual heights between 2"-12". TRS products can be used for residential and commercial use to protect the facade from rainsplash, melting snow and everyday debris.

TECHNICAL DATA

Height: (inch)	>2.0
Width: (inch)	19-11/16
Length: (inch)	39-3/8
Weigth: (lbs/piece)	31.00
Material:	Composite (channel base)
Color: (RAL)	7032
Grating:	full galvanized mesh grating
Plinth open preparation, d=110 mm: (piece)	1
Material requirement: (pcs/pcs)	1.01
Coverage rate: (hr/pcs)	0.50
Packaging unit: (piece/ pal.)	40

Reviewed: 2015-10-02 14:30:58



DIADEM USA, Inc.
8795 SW Tualatin Sherwood Rd #1005, Tualatin, OR 97062
info@diademusa.com • www.diademusa.com



Green Up the Roof!