

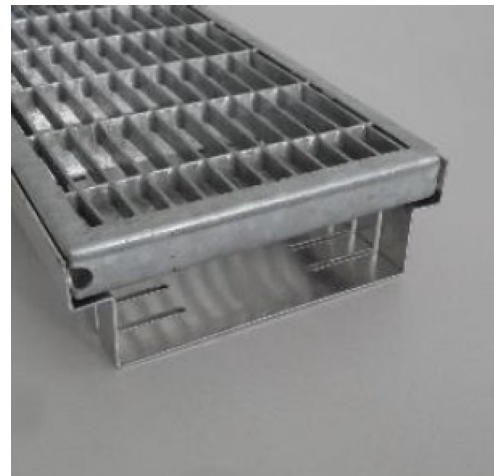
# RNFU-AL-05-FF

230544

2" High, open bottomed drainage channel with aluminum housing and mesh steel grating.

## KEY FEATURES

- Low installation profile
- Easy to clean
- Durable metal housing
- Two way drainage



## APPLICATION

The RNF roof channels should be positioned along terrace doors, low windows, and at terrace-wall junctions. Their use should be considered especially where there are large surface areas, as these also collect a substantial amount of rainwater.

## SPECIFICATION

The RNF terrace channels ensure the drainage of roof terraces adjacent to walls; made of aluminum housing and hot-dip galvanized or stainless steel grille covers. Size: 39 3/8" x 5 11/16" x 2"(L x W x H).The mesh grid spacing is 1 1/4" x 3/8". Weight: 13 lbs/pcs Provide standard 2 year warranty against defects in materials and/or manufacture.

## TECHNICAL DATA

Material Grating:	Galvanized mesh
Durability classification:	A15
Lenght: (inch)	39 3/8"
Weigth: (lbs/pcs)	13.02
Material Housing :	Polypropylen
Width: (inch)	5 11/16"
Housing Color: (RAL)	7032
Packaging unit: (piece/ pal.)	65
Material requirement: (pcs/pcs)	1.02
Installation standard: (hr/piece)	0.45
Height: (inch)	3-1/8" to 4 1/2"

Reviewed: 2021-10-07 16:51:31



DIADEM USA, Inc.  
8795 SW Tualatin Sherwood Rd #1005, Tualatin, OR 97062  
info@diademusa.com • www.diademusa.com



Green Up the Roof!