

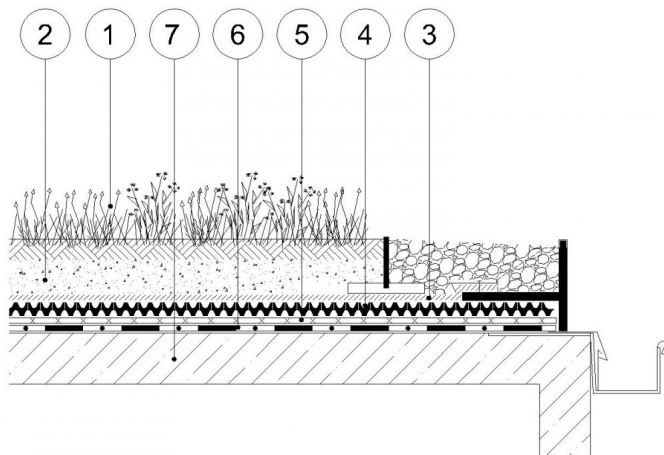
# FLW-400

16mil root barrier

340101

## KEY FEATURES

- Polystyrene- tar- and oil resistant
- Suitable for heavy duty use as slip layer
- Compatible with every waterproof membrane
- Large, 19.66 × 82 Ft pieces



(1)Vegetation, (2)SEM Growing media, (3) VLF filter geotextile (4)DiaDrain-25H flow delay retention board, (5)VLU mechanical protection fleece, (6)FLW-400 root barrier layer, (7)Roof construction

## APPLICATION

The product is particularly recommended for additional protection against root penetration on shallow green roofs with regular drought resistant vegetation. Ideal for garage roofs, canopies or outbuildings. It can be used for partial greening of larger roof areas and is a perfect answer for lining planting beds.

## SPECIFICATION

FLW-400 is a thermoplastic membrane made from LDPE, which comes in rolled 19'x82' pieces. It is designed to prevent root penetration of the underlying waterproofing. The product is resistant to bitumen and ultraviolet degradation and to biological and chemical environments normally found in soils. Installation is on top of the waterproof membrane, with a 4-foot overlap.



## TECHNICAL DATA

Thickness: (mil)	16
Width: (ft)	19'-8"
Length: (ft)	82'
Roll area: (sqf)	1614
Weight per area unit: (oz/syd)	11
Density: (lb/ft3)	>57
Diameter: (inch)	13"
Tensile strength MD: (PSi)	>2175
Tensile strength CMD: (PSi)	>2320
Elongation MD: (%)	>350
Elongation CMD: (%)	>450

Reviewed: 2014-02-06 10:29:06



DIADEM USA, Inc.  
8795 SW Tualatin Sherwood Rd #1005, Tualatin, OR 97062  
info@diademusa.com • www.diademusa.com



Green Up the Roof!