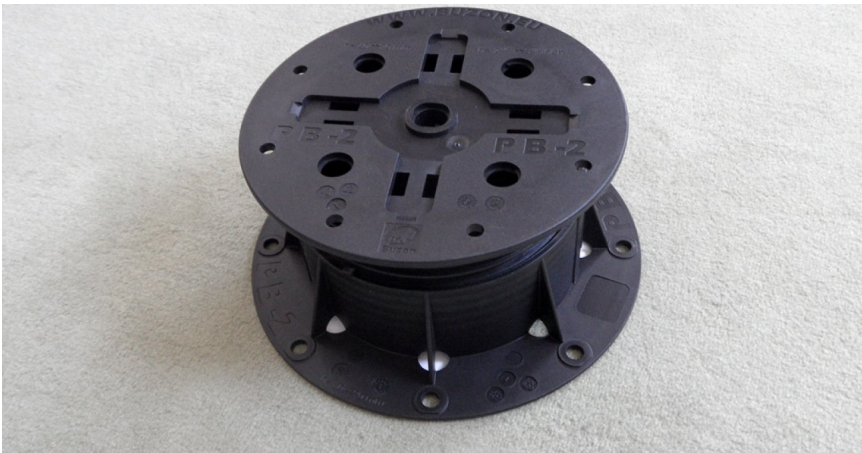
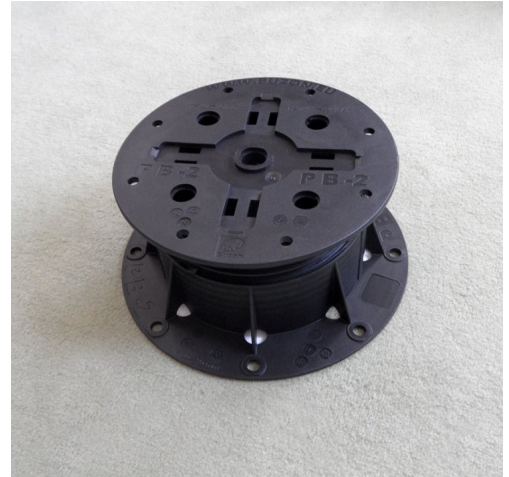


# SLH-90

Infinitely height adjustable pedestal

610135

## KEY FEATURES



## APPLICATION

## SPECIFICATION

Infinitely height adjustable, flat polypropylene pedestal, designed for constructions where the pavement is supported by battens. Resistant to chemicals. surface of bottom support: 197 mm in diameter; height: 60-90 mm; load-bearing capacity: 1,000 kg / pedestal; weight: ca. 0.389 kg / piece.



## TECHNICAL DATA

Height: (mm)	60-90
Diameter: (mm)	197
Top loadability: (kg)	1,000
Weight: (kg)	0.389
Material:	Polypropylene
Colour:	black
Packaging unit: (pieces/carton)	36
Coverage rate: (h/piece)	0,08

Reviewed: 2012-07-26 10:03:07



DIADEM USA, Inc.  
8795 SW Tualatin Sherwood Rd #1005, Tualatin, OR 97062  
info@diademusa.com • www.diademusa.com

Green Up the Roof!

