

KLRA/KLSA-AL

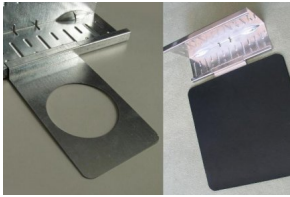
The KLRA anchor pieces help to hold the KLS gravel boards in place without penetrating the waterproof membrane.

#162036



Manual

■ Green up the roof!



Application:

KLRA helps to create a solid edge along a gutter line on roofs which do not have a perimeter wall, or it can be used to form an edge for a confined green roof area. □

The system does not penetrate the waterproof membrane and still allows water to flow to drainage outlets.

Installation instructions:

For an exposed green roof edge, place the edge profiles end to end directly on top of the roof membrane protection strips. It is recommended to raise the KLS boards at the lower edge of the roof by putting at least 1/8" thick mat every foot, to lift the KLS boards up for smooth waterflow towards the gutter. Placed them parallel to the water flow direction, and attached to prevent slippage. In case of concerns about material compatibility please contact Diadem, or just cut and use the given waterproof membrane. Place the KLS gravel board right onto the strips. Unless the construction plan calls for something different, attach the metal anchorage pieces to the boards, exactly where the strips are. Cover the anchorage pieces with the self-adhesive mat, or use the same material as the membrane. Follow the membrane manufacturer's instructions for securing the mats.

Installation Tools:

Installation Photos:

Reviewed: 2014-08-08 09:58:57

DIADEM USA, Inc.

8795 SW Tualatin Sherwood Rd #1005, Tualatin, OR 97062
Email: info@diademusa.com; Web: www.diademusa.com